

LinkedIn



What is LinkedIn?

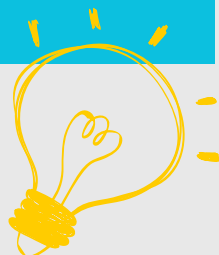
LinkedIn is a professional network and a valuable tool for job searching, recruiting employees, expanding your professional network, and acquiring new skills and certifications.

It provides a platform where individuals can connect, communicate, and collaborate within the professional community.

LinkedIn enhances your opportunities to network with professionals.

Create Your LinkedIn Profile

- **Create an Account:** Visit LinkedIn.com and click on "Join Now."
- **Complete Your Profile:** Add your name, a professional profile photo, a compelling headline, and a summary that reflects your skills, education, and work experience.
- **Customize Your Profile:** Add skills, achievements, and certifications.
- **Share Your Profile:** Make your profile public.



Parts of the Profile

- **Introduction:** basic information, current job, headline, profile picture.
- **About Me:** a summary of your background and skills.
- **Featured:** highlight your top projects.
- **Background:** work experience, education, certifications, volunteer experience.
- **Skills:** showcase your specific skills.
- **Accomplishments:** recognitions, publications, languages.

How to Add Skills?

1. Click on: "Add profile section."
2. Select: "About" for the summary or "Skills" for skills.
3. Fill in the required information.



Tips for Better Visibility:

- be active, regularly update your profile and participate in discussions
- connect with colleagues, professors, mentors, and other professionals in your industry
- ask former colleagues, professors, and supervisors for recommendations

Join LinkedIn today and take advantage of all the opportunities for advancing your career!



CAREER CENTER
E-mail: karijere@efri.uniri.hr
Address: Ivana Filipovića 4, 51000 Rijeka
Phone Number: 051 / 355 - 187